



The world of lifting technology



The Böcker Product Line



Truck and Trailer Cranes

Truck Cranes

The current generation of Böcker truck cranes continues the long-term experience of the company in crane and lift technology. Performance, reliability, durability and ultimate safety are the key characteristics of all our cranes exceeding all expectations. Telescoping lengths varying from 28 to 44 metres and a payload of up to 6 tons make Böcker truck cranes the best machine for any application. The closed aluminium profiles ensure stability and particular durability of the entire boom.

Thanks to the powerful PTO auxiliary drive of the truck Böcker truck cranes impress by highest telescoping and hook speeds in combination with low fuel-consumption and minimum maintenance costs.

The modern Böcker PLC automatically approves the maximum working range depending on the position of the supports and the suspended load. Thus it provides customers with surpassing user-friendliness and maximum safety .



Truck Crane AK 32/1500 PLC



AK 32/1500 PLC - low dead weight ensures convenient driving characteristics



AK 32/4000 PLC reaches the rear side of the roof without any problem

Technical Data

Model	AK 32/1500 PLC	AK 35/3000 PLC	AK 32/4000 PLC	AK 44 /4000 PLC	AK 41 / 6000 PLC
Max. payload [kg]	1,500	3,000	2,000 / 4,000	4,000	3,000 / 6,000
Gross vehicle weight [t]	7.49	7.49	13 / 18	15.5	26
Max. telescoping length [m]	31.40	34.40	32.00	44.00	41.00
Max. main boom length[m]	24.40	24.40	25.00	33.00	32.50
Max. range crance operation [m] ¹⁾	26.60 ¹⁾	26.60 ¹⁾	28.00 ¹⁾	28.00 ²⁾	33.50 ¹⁾

1) at 250 kg 2) at 300 kg



Trailer Crane AHK 30/1400 PLC

Trailer Cranes

Trailer cranes are considered to be economically interesting alternatives to the well proven truck cranes. Mounted on a tandem chassis, these machines reach payloads from 800 to 1,600 kg depending on the model, with telescoping lengths varying from 25 to 30 metres. The chassis, equipped with an overrunning brake, impresses by excellent driving characteristics. The optional manoeuvring drive ensures precise on-site positioning without the need of a towing vehicle.

Powerful petrol or diesel engines, easily accessible for maintenance, enable maximum slewing, telescoping and hook speeds in combination with low fuel-consumption and minimum maintenance costs.

The modern Böcker PLC is part of the standard equipment of all trailer cranes. It automatically calculates the maximum working range in any situation and thus provides maximum safety and convenience.



Transport with suitable passenger car due to low dead weight



Trailer Crane 30/1600 with access platform

Technical Data

Model	AHK 25/800 PLC	AHK 27/1200 PLC	AHK 30/1400 PLC	AHK 30/ 600 PLC
Max. payload [kg]	800	1,200	1,400	1,600
Gross vehicle weight [kg]	2,700	3,500	3,500	3,500
Max. telescoping length [m]	25.00	27.00	30.00	30.00
Max. main boom length [m]	20.00	22.00	22.00	23.00
Max. range crane operation [m] ¹⁾	17.50	18.60	18.80	19.00

1) with 250 kg

Construction and Furniture Lifts

Construction Lifts

Böcker construction lifts have been reliable machines on numerous construction sites for decades. The legendary durability of these lifts is based on robust design as well as low-wear components. This solid design has sustainably shaped the Böcker reputation.

Due to decades of experience in the field of construction lifts, Böcker continuously improved its product range with regular upgrading and completely new models and technologies. The sophisticated technology of the lifts has been constantly enhanced by innovative ideas in order to further upgrade the construction lifts.

Böcker construction lifts thus become an unrivalled combination of state-of-the-art technology and absolute durability as well as reliability.



Construction Lift Junior HD 24 K/0-7 with integrated knee joint



HD 31 K/1-6 with integrated knee joint



Toplift Eco



HD Junior 18/0-5 with knee joint

Technical Data

Model	Toplift	Junior Construction Lift	HD-K Construction Lift
Max. payload [kg]	150– 250	250	270
Gross vehicle weight [kg]	approx. 56 ¹⁾	750 – 1,200	1,800 – 2,300
Max. lifting height [m]	20.3	17.8 – 23.7	25.3 – 34.6
Mean rope speed [m/min]	approx. 20 –40	24 – 48 / 45 ²⁾	60
Drive	Electric motor	Electric motor or Petrol engine	Petrol engine

1) Dead weight of the drive unit 2) With petrol engine



Furniture Lift Agilo HL 27/1-6 LH

Furniture Lifts

Efficiency, speed and safety are key characteristics of today's removals. For most people removals are automatically involved with enormous stress. Thus it is particularly important that they can totally rely on the technical equipment involved.

In this respect, Böcker furniture lifts clearly benefit from the company's long-term experience in the fields of crane and lift technology. Ongoing development of all models has led to a broad product range where each model is exactly tailored to customers' individual needs. The compact Junior clearly shows its enormous strengths in restricted areas where space is limited. The Arriva is the classical trailer-based furniture lift which easily performs nearly any removal job due to its enormous power. And in case maximum mobility is needed, the strong truck-based Agilo furniture lifts will be the right choice.



Arriva HD 26/1-6 LH



Junior HD 24/0-7



Furniture Lift Toplift AE 200 MV

Technical Data

Model	Toplift	Junior	Avario	Arriva	Agilo
Max. payload [kg]	200	250	400	400	400
Gross vehicle weight [kg]	approx. 56	750 – 1,200	1,900	1,800 – 2,300	2,800 – 8,500
Max. lifting height [m]	20.30	17.7 – 23.5	25,8	25.8 – 36.5	26.2 – 54.9
Mean rope speed [m/min]	0 –36	24 – 48 / 45	45	60	60
Drive	Electric motor	Electric motor or petrol engine	Petrol engine	Petrol engine	Petrol engine or PTO

Construction Hoists and Industrial Lifts

Construction Hoists



GIANT-Lift

For years now, Böcker construction hoists have been reliable transport systems on various construction sites. Due to sophisticated components and first-class workmanship, these models have proved their superior quality even under extremely challenging circumstances. The enormous durability and reliability impress people around the world.

The broad product range provides customers with transport systems which are exactly tailored to their projects, starting with compact cable hoists up to large rack and pinion hoists for material and personnel. With lifting heights up to 300 m (higher upon request) as well as lifting capacities up to 3.2 tons, Böcker construction hoists are characterised by maximum performance in particular. So they are perfectly suitable for extremely challenging projects.

Like performance, maximum safety is an equally important factor. All construction hoists comply with all safety requirements for transport of material and personnel. Furthermore they are equipped with the latest safety technology.



Superlift S225 with rotating load platform



Superlift MX 624 with platform 1.70m x 1.40m



Superlift LX 2024 in twin-cage operation

Technical Data

Model	Superlift S225	Superlift Z320/330	Superlift MX 320	Superlift MX	Superlift LX	GIANT-Lift
Max. payload [kg]	200	300	300	650 –2,000	1,700-2,300	1,500 – 3,200
Max. no. of persons	–	–	3	4 –12	7-12	28
Max. lifting height [m]	50	50 –100	100	200	200	300 ¹⁾
Max. lifting speed [m/min]	25	20 – 30	20	24 – 40	24-40	30 – 60
Motor output [kW]	1.3	1.7 –2.2	2.2	5.5 –15	7,5	26 – 52

1) Higher upon request



SERVICE-Lift

Industrial Lifts

The SERVICE-Lift is the ideal lift for challenging projects. The permanent installation on chimneys, silos, cooling towers or container cranes requires the use of particularly durable materials. The entire construction including the mast is therefore characterized by superior quality components. Corrosion resistant metals such as stainless steel, aluminium and galvanized steel guarantee maximum durability.

The fully closed cabins of the SERVICE-Lift have been designed to withstand even the most challenging weather conditions. The glass-fibre reinforced material ensures excellent thermal insulation. An aluminium cabin is available upon request.

Safety plays a key role regarding the overall concept of the lift and even allows for unrestricted use for public passenger transport. A temporary installation of the SERVICE-Lift on publicly accessible buildings is therefore equally possible.



Cabin made of weather-proof plastic



Base enclosure with access door (project-dependent)



Landing control unit in weather-proof design

Technical Data

Model	SERVICE-Lift
Nominal load [kg]	240 – 1,500
Max. no. of persons	3 – 16
Max. lifting height [m]	300 ¹⁾
Lifting speed [m/min]	24 – 60
Motor output [kW]	3.7 – 26

1) Higher upon request

Wall and Grab Technology



Mini Crane

Wall-building technology

The building of walls requires the transport of extremely high loads of bricks on a construction site. The handling of heavy-stone formats as well as the frequent bending result in particularly higher labour. Böcker wall-building technology ensures a substantial physical relief in these situations. At the same time, processes are becoming clearly more efficient.

The well-known mini cranes have been tailor-made for the handling of bricks on a construction site. They particularly impress by their maximum user-friendliness and easy set-up. Even heavy stone formats up to 500 kg can be lifted without any problem thanks to the enormous load capacity. Stable clamps can be individually adjusted to any regular brick format.

In addition, Böcker offers lifting platforms as well as wall-building accessories such as aluminium ladders and mortar slides to further increase efficient working on-site.



Quickmax



Lifting Platform



Trailer Mini Crane

Technical Data

Model	Quickmax	Mini Crane	Trailer Mini Crane	Lifting Platform LT
Max. payload [kg]	100	500	300	3,000
Dead weight [kg]	185 ¹⁾	1,090 ¹⁾	2,700	1,100 – 1,250
Max. hook height [m]	2.90	4.5 / 6.0	4.5 / 6.0	–
Max. masonry height [m] approx.	2.75	3.75 / 5.25	3.75 / 5.25	10.45
Drive	Chain hoist	Electr. motor/ chain hoist	Petrol motor/ chain hoist	Electric motor

1) dead weight without ballast weight



HG1T-4500 on fork-lift truck

Hydraulic Clamps

Böcker hydraulic clamps have been designed for pallet-free transport of brick packages in different sizes and formats. In combination with hydraulic loading cranes, fork-lift trucks or portal cranes, they transport all kinds of sand-lime stones, bricks, hollow block stones, lightweight stones, cellular concrete stones, interlocking stones, kerb stones and paving stones. The accurate design ensures safe handling of the loads and has proven its reliability in various situations.

The combination of high-strength materials and extremely lightweight design ensures a low dead weight and consequently outstanding load capacities of these clamps. All models are available in different sizes with fixed or adjustable clamping heights.



HGP-1200/H2 on truck loading crane



HGP-1800/2.1 on fork-lift truck



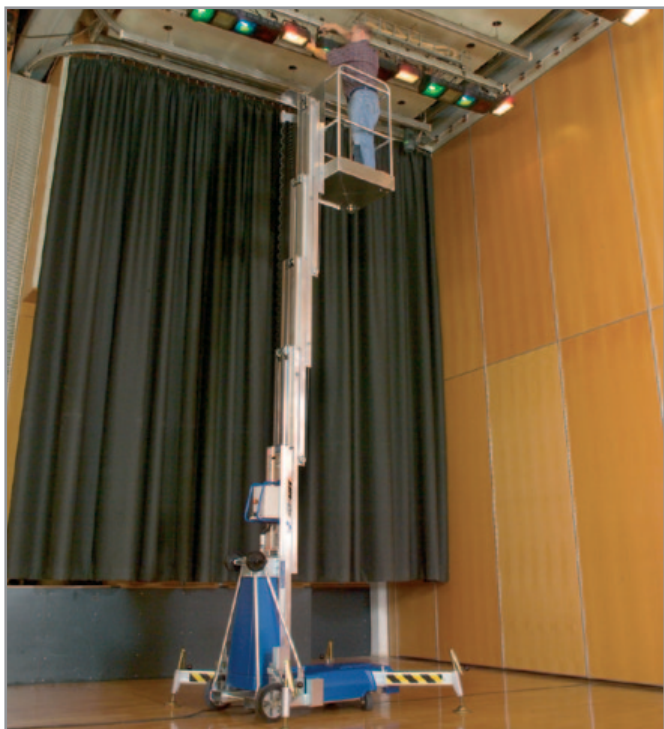
Roof tile clamp DZ6-240 on fork-lift truck

Technical Data

Model	Clamps for the Building Material Industry	Clamps for the Concrete-Block Industry	Clamps for the Sand-Lime Brick Industry	Clamps for the Roof-Tile Industry
Opening widths [m]	0.00 – 1.80	0.36–1.34	0.75 – 1.40	–
Clamping widths [m]	0.40 – 1.20	0.40–1.20	0.96 – 1.00	0.330 – 0.367
Clamping heights [m]	0.85 – 1.60	0.85–1.00	1.01 – 1.65	0.12
Load-bearing capacity [kg]	1,300 – 2,500	1,500 – 5,000	1,600 – 6,000	500 – 1,250
Weights [kg]	255 – 480	330– 750	520 – 1,250	280 – 420

Deviating dimensions on request

Personnel and Material Lifts



PHC Lift

ALP Personnel and Material Lifts

All Böcker ALP Lifts are characterised by sophisticated technologies, first-class workmanship as well as maximum performance. The telescopically extendible profiles made of special aluminium are particularly lightweight and strong at the same time. Material lifts therefore reach lifting heights up to 7.5 m whereas the personnel lifts even reach heights up to 14 m.

The compact and lightweight design is another key strength of Böcker ALP Lifts. Even large personnel lifts can be loaded into a commercial vehicle by one person only thanks to the loading aid which is standard for all models. The transport through narrow hallways or standard-sized doors as well as by elevator is also possible without any problem.



Cinema Lift



The PHC Lift even passes through standard-sized doors thanks to its compact design.



Material Lift

Technical Data

Model	Personnel Lifts	Cinema Lift	Material Lifts
Load-bearing capacity [kg]	115 – 140	110	250 – 500
Dead weight [kg]	250 – 430	246	99 – 199
Working height [m]	6.5 – 14	10.5	–
Lifting height/platform height [m]	4.5 – 12	8.5	3 – 7.5
Construction height [m]	1.98 – 2.8	1.99	1.6 – 2.2



Mobil-lift

Mobil-lift stands for tailor-made lifting solutions for the transport of passengers inside and outside of buildings. Due to the broad range of different models and their compact design, these lifts can be individually adapted to any kind of project.

The product range of mobil-lift is as broad and individual as customers' needs. From simple stair lifts which are built in existing stairways through to hoisting lifts to surmount low height differences and vertical lifts for several floors, Böcker offers the right solution for any project.

In this case, versatility is the key aspect of the products' big success. Even for challenging projects, mobil-lift has always an optimum solution to overcome architectural barriers. Mobil-lift is therefore more than just a mobility aid. It is a sophisticated lift system that fits perfectly in existing building structures.



Technical Data

Model	mobil-lift BML 250	mobil-lift BML 400	mobil-lift BML BML 600	Stair-Plattform lift BPL 200G	Hoisting Lift BHL 300
Lifting capacity [kg]	250	400	600	200	300
Platform size [mm]	1,100 x 1,300	1,100 x 1,400	1,100 x 2,200	700 x 830	800 x 1,500
Lifting height [m]	12.00	13.00	8.50	-	2.00
Lifting speed [m/min]	9.0	9.0	9.0	5.0	6.0
Operation voltage [V]	230	230	230	230	230

Roof Accessories



**Aluminium Roof-Tile Platform
DZV 1-200 –single**

- Load capacity 200 kg
- Dead weight 22 kg
- Safe storage of 1 row of roof tiles on an inclined roof
- precise adjustment to the inclination of the roof



**Aluminium Roof-Tile Platform
DZV 1-200 –single**

- Load capacity 400 kg
- Dead weight 38 kg
- Safe storage of up to 2 rows of roof tiles on an inclined roof
- precise adjustment to the inclination of the roof



**Aluminium Roof Stand
DS 360A / DS 680A**

- Load capacity 360 or 600 kg
- Dead weight 6.5 kg
- Precise adjustment to the inclination of the roof due to large adjustment range
- 2 stands necessary



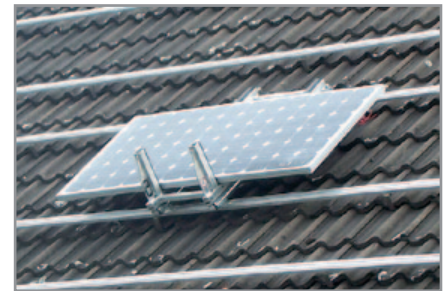
Rolling Platform

- Load capacity 200 kg
- Dead weight 8 kg
- Damage-proof stowing of loads on natural slate
- Solid rolls made of special plastics



**Aluminium Roof-Tile Platform
for Construction Lifts, single**

- Load capacity 200 kg
- Dead weight 14 kg
- Simple assembly by hooking in roof battens
- Easy to move on robust plastic rollers



**Solar-cell module platform
SMV 150**

- Load capacity 150 kg
- Dead weight 12 kg
- To be hooked in assembly rails of solar modules
- Rubber rests for damage-proof transport



Load-bearing devices



Roof-tile clamp
DZZ 1-200 – single

- Load capacity 200 kg
- Safe transport of 1 row of roof tiles
- Loose, bandaged or in wrapped shrink foil
- Grab mechanism for automatic unloading of the roof tiles



Roof-tile clamp
DZZ 2-400 - double

- Load capacity 400 kg
- Safe transport of up to 2 rows of roof tiles
- Loose, bandaged or in wrapped shrink foil
- Grab mechanism for automatic unloading of the roof tiles



Multipurpose tile clamp
MZZ 2-360 – double

- Load capacity 360 kg
- Safe transport of clay tiles
- Loose, bandaged or in wrapped shrink foil
- Grab mechanism for automatic unloading of the roof tiles



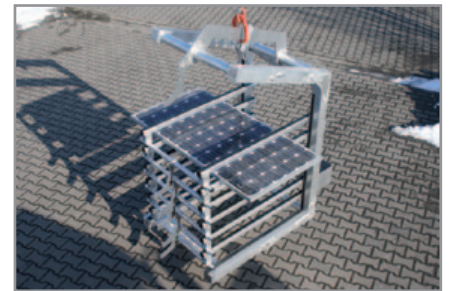
Aluminium Tipper Basket
KM 500 / KM 1000

- Load capacity 500 or 1,000 kg
- Volumetric capacity 315 or 625 l
- Automatic discharge by slewing the mounting bracket



Aluminium pallet fork
PG 600A/PG 1000A

- Load capacity 600 or 1,000 kg
- Adjustable fork rakes
- Balancing the centre of gravity by adjusting the lifting bracket



Aluminium solar-cell fork
SMG 500

- Load capacity 500 kg
- Transport of up to 14 modules
- Safe unloading thanks to convenient system of drawers
- Rubber rests for damage-proof transport



Crane Clamps

- Load capacity 1,500 kg
- Transport of brick packages on a construction site
- grid enclosure on all sides
- securing of the underside by plastic safety guard



Steel pallet forks

- Load capacity 2,000 kg
- Stable, adjustable fork rakes made of fine-grained steel
- incl. locking pin clamp and security chain
- automatic adjustment of centre of gravity



ther accessories



Construction winches

- Load capacity up to 200 kg
- Lifting height up to 50 m
- Universally applicable on the construction site
- various load-bearing devices



Flat-roof cutter

- Infinitely variable cutting depth
- Knife spacing 525 mm
- Cutting of roof membrane and insulation at the same time



Warning Sign – double-sided

- Dead weight 11.5 kg
- Effective security of construction site
- Clear warning notice
- Additional ad space (40 x 50 cm)



Rubbish Chutes

- Plastic tube (1.10 m) made of high-strength polyethylene
- Dead weight 10 kg
- Height max. 40

Accessories for wall-building technology



Mortar slides

- Robust stainless steel design
- Widths between 10.0 and 36.5 cm
- Changeable toothed strips for thin-joint mortar
- Handle for working overhead



Aluminium ladder

- Four-step ladder
- Height 97 cm
- Easily movable by two rollers
- Foldable for space-saving transport

Böcker Belgium NV

Boomsesteenweg 101 · D-2630 Aartselaar
Fon +32 (0) 3/45 76 241
Fax +32 (0) 3/45 76 242
Mail belgium@boecker-group.com

Böcker France SAS

Zac du TEC · F-30320 Marguerittes
Fon +33 (0)4 6620 9364
Fax +33 (0)4 6620 9926
Mail france@boecker-group.com

Böcker Italia srl

Via C. Beccaria 3 · I-37036 San Martino
Fon +39 045 / 87 80 399
Fax +39 045 / 87 80 420
Mail italia@boecker-group.com

Böcker Nederland B.V.

Rolweg 25 · NL-4104 AV Culemborg
Fon +31 (0) 345/51 00 99
Fax +31 (0) 345/51 08 66
Mail nederland@boecker-group.com

Böcker Schweiz AG

Striegelstraße 1 · CH-4665 Ortringen
Fon +41 (0) 62/797 62 62
Fax +41 (0) 62/797 62 68
Mail schweiz@boecker-group.com



Böcker Maschinenwerke GmbH

Lippestraße 69-73 · D-59368 Werne
Fon +49 (0) 23 89/79 89-0
Fax +49 (0) 23 89/79 89-9000
Mail info@boecker-group.com
Web www.boecker-group.com